

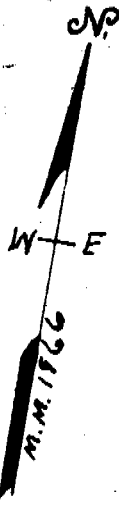
555-593

THIS PLAT IS NOT A SUBDIVISION
AS DEFINED BY THE GREENVILLE
COUNTY SUBDIVISION REGULATIONS.

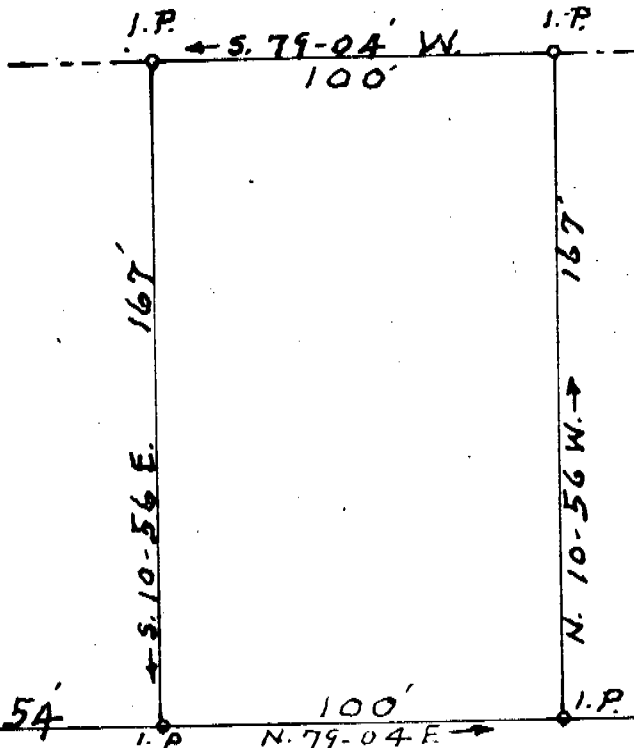
10/17/72

J. Oliver Jones
Chairman, Secretary, or Director of
Planning.

Greenville County Planning Commission



W—E NOW OR FORMERLY—A.S. PAINTER



OCT 17 1972

11555 ✓

FILED
GREENVILLE CO. S.C.
OCT 17 2 05 PM 1972
ELIZABETH HIDDLE
R.M.O.

PROPERTY OF

NANNIE · T · SMITH

LOCATED NEAR THE SOUTHERN CITY LIMITS OF GREER

CHICK SPRINGS TOWNSHIP GREENVILLE COUNTY

SOUTH CAROLINA

SCALE: 1" = 40 FEET SEPT 15 1972

RECORDING

555-593

H.S. BROCKMAN, RLS # 959
GREER, S.C.

PAID \$ 1.25

Recorded Oct. 17, 1972 At 2:05 P. M. #11555

Photo